



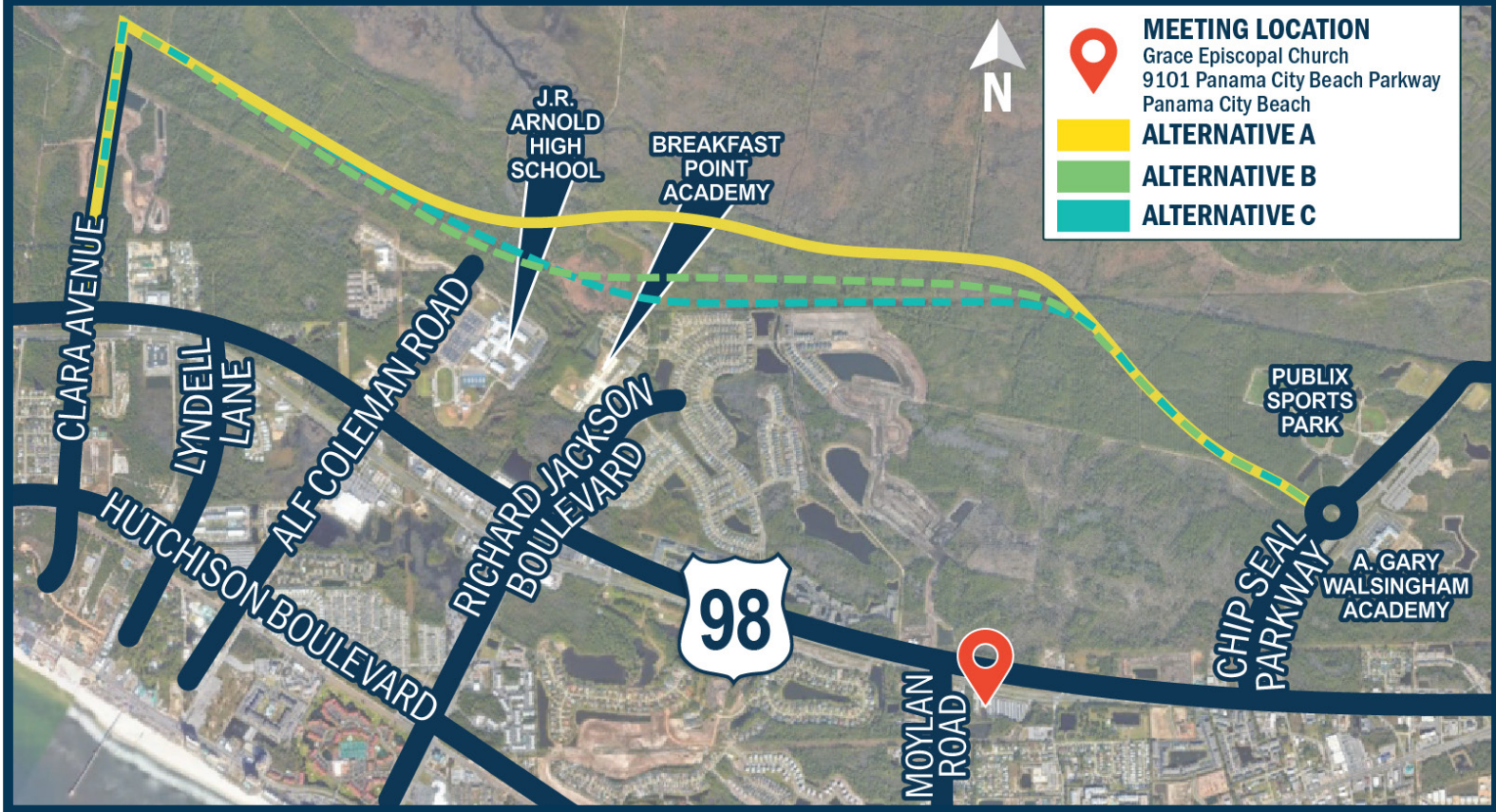
Philip Griffiths Sr. Parkway Phase III PD&E Study and Design

From Clara Avenue to Chip Seal Parkway



FINANCIAL PROJECT IDENTIFICATION NUMBERS: 442483-4-34-01 AND 442483-4-34-02

ETDM #14562



PUBLIC ALTERNATIVES MEETING

THURSDAY, MARCH 6, 2025 **5 P.M. - 7 P.M.**

GRACE EPISCOPAL CHURCH
9101 PANAMA CITY BEACH PARKWAY
PANAMA CITY BEACH

This meeting is being held to offer interested persons new information, provide an opportunity to learn about the project, and allow them to share their views. There will be maps, drawings, and other information on display. Bay County representatives and project team members will be available to explain proposed improvements, answer questions, and receive comments.

Project Description: Bay County is conducting a Project Development and Environment (PD&E) Study and preparing Design plans for the third phase of the Philip Griffiths Sr. Parkway from Clara Avenue to Chip Seal Parkway. The total distance of this study is approximately 5.1 miles.

What Are the Project Goals? The new Philip Griffiths Sr. Parkway Phase III is intended to improve regional connectivity in the area, thereby relieving some of the congestion on U.S. 98 (Panama City Beach Parkway) and improving safety outcomes in the area. The PD&E Study will identify and assess impacts of a new roadway corridor connecting Clara Avenue to Chip Seal Parkway on the social, economic, cultural, natural, and physical environment in this area of Bay County. Preliminary design activities will be completed concurrently with the PD&E Study to more efficiently move the project forward toward construction.

IMPROVE SAFETY

IMPROVE REGIONAL CONNECTIVITY

RELIEVE CONGESTION ON U.S. 98 (PANAMA CITY BEACH PARKWAY)

We Want To Hear From You We invite you to participate by providing your comments and ideas on the proposed improvements. You can get involved in various ways—through phone, mail, or email. All comments provided, or postmarked, on or before Monday, March 17, 2025, will become part of the official record.

Vincent Spahr, P.E. Consultant Project Manager

- ✉ PGSParkway@kimley-horn.com
- 📍 120 Richard Jackson Boulevard, Suite 230
Panama City Beach, FL 32407
- 📞 (850) 328-2923

Cliff Johnson Bay County Project Manager/ Traffic Engineer Manager

- ✉ cjohnson@baycountyfl.gov
- 📍 840 W. 11th Street
Panama City, FL, 32401
- 📞 (850) 248-8741



To learn more about Philip Griffitts Sr. Parkway, scan the QR code with your phone to access the webpage. Or, visit the webpage at www.philipgriffittsparkway.com

What Does a PD&E Study Entail? A PD&E Study involves developing and evaluating alternative roadway alignments to identify the preferred option that improves safety and enhances system connectivity, while minimizing impacts on the social, natural, and physical environments. Public engagement, through the exchange of information and feedback, is a key component of this process.

What Can You Anticipate? Bay County will present new information regarding the PD&E Study and the preferred alternatives. Conceptual design plans will be available for review as well. A public hearing is anticipated to be held fall of 2025, after which the PD&E Study will be complete. Design and permitting for the project will continue through 2026. Right-of-way and construction will follow.

2023 | WINTER



PD&E STUDY BEGINS

2023 | SPRING



PUBLIC KICKOFF MEETING

2023 | SUMMER



PRELIMINARY DESIGN BEGINS

2025 | WINTER



PUBLIC ALTERNATIVES MEETING

2025 | FALL



PUBLIC HEARING

2026 | WINTER



PD&E STUDY COMPLETE

2027 | WINTER



DESIGN AND PERMITTING

Bay County adheres to the Americans with Disabilities Act and will make reasonable modifications for access to this meeting upon request. Public participation is solicited without regard to race, color, national origin, age, sex, religion, disability, or family status. Please call the County Administration Office at (850) 248-8140 to make a request. For Hearing Impaired, Dial 1-800-955-8771 (TDD), and 1-800-955-8770 (Voice). Request must be received at least seven days in advance of the meeting in order for Bay County to provide the requested service.